

PDF NOTES and TIPS

****PRINT THIS PAGE FIRST**** to check that the printed scale is correct. The black line to the right should be five inches long. If it measures to 5 inches then print the rest of the pages.

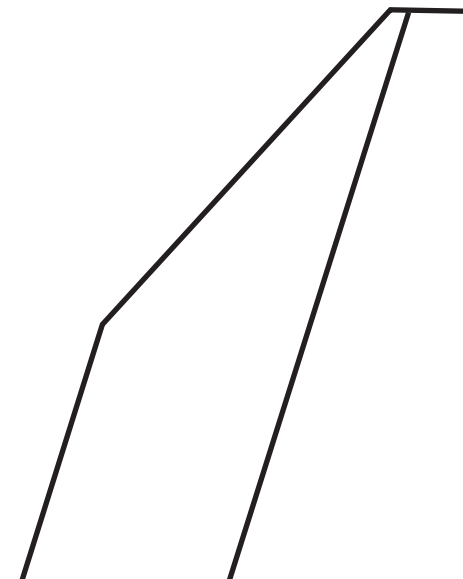
*You will need to trim any side of a page that has the red guide lines. Just trim right up to the lines. These lines should match up exactly and will be 3 inches long.

*Use the **BIG** letters at the edge of the pages to help you put the templates together in the right orientation.

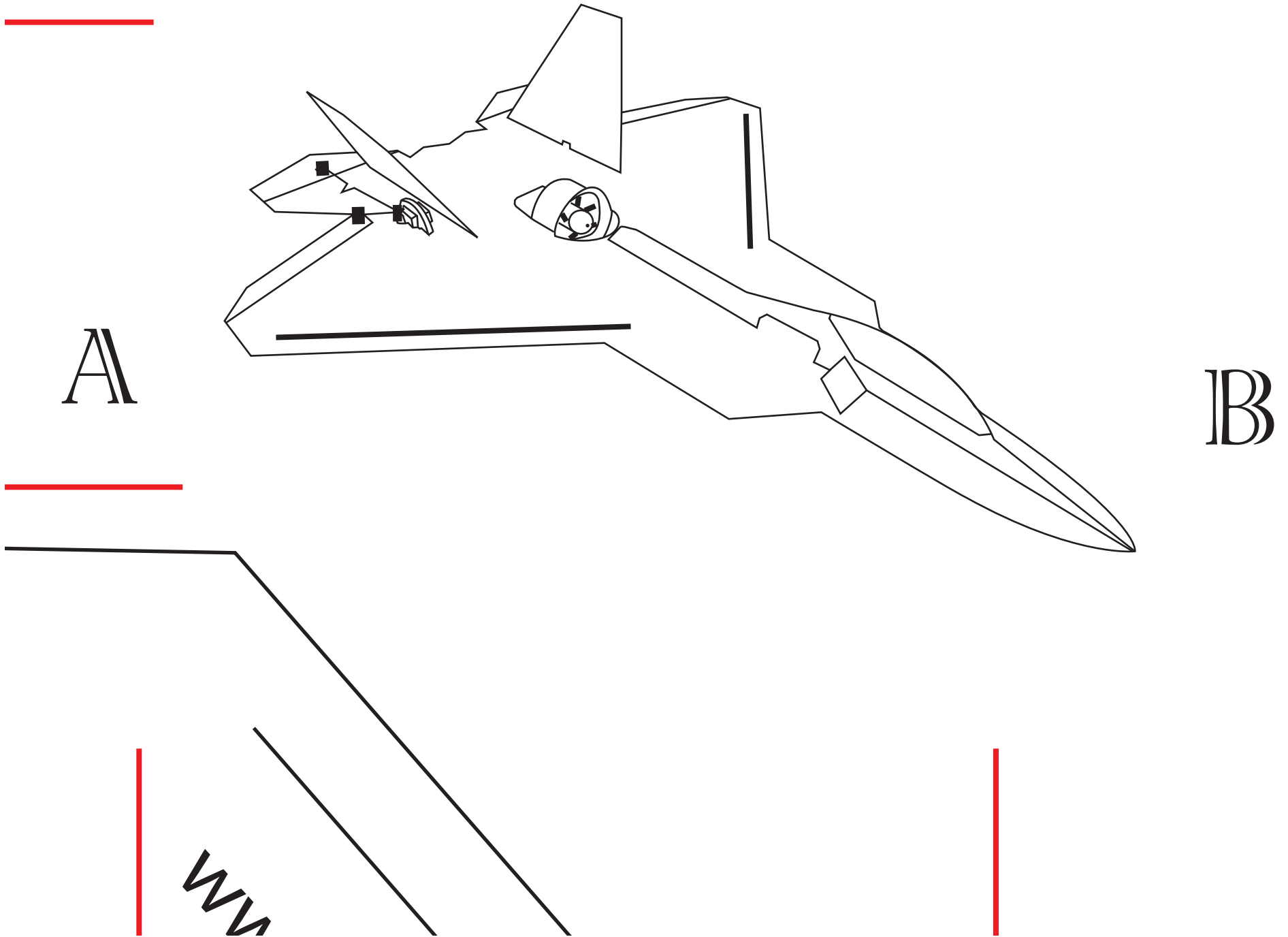
Print scale

5 inches

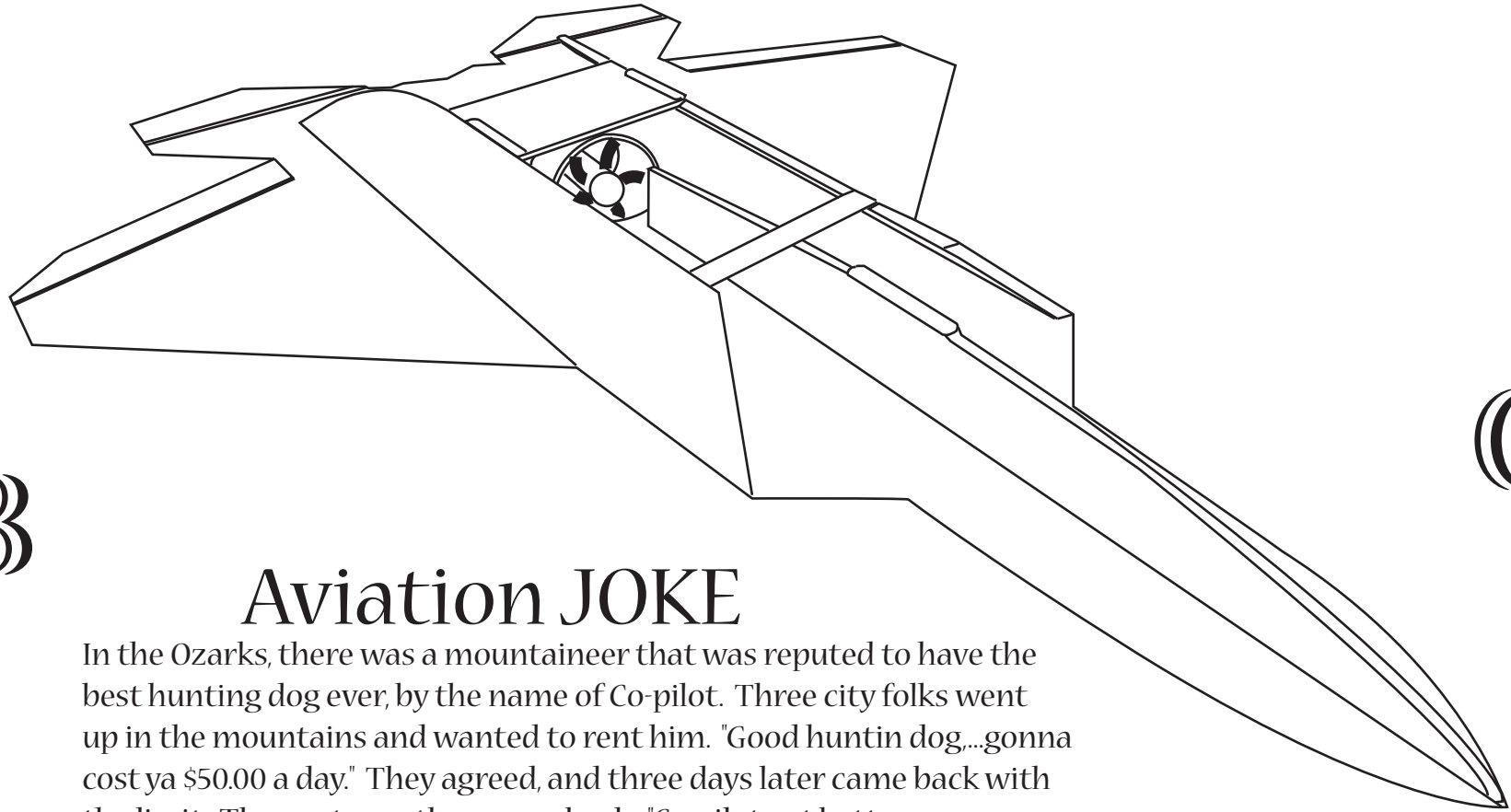
A



Top 3D view of MikeysRC F-22 Raptor



Bottom 3D view of MikeysRC F-22 Raptor

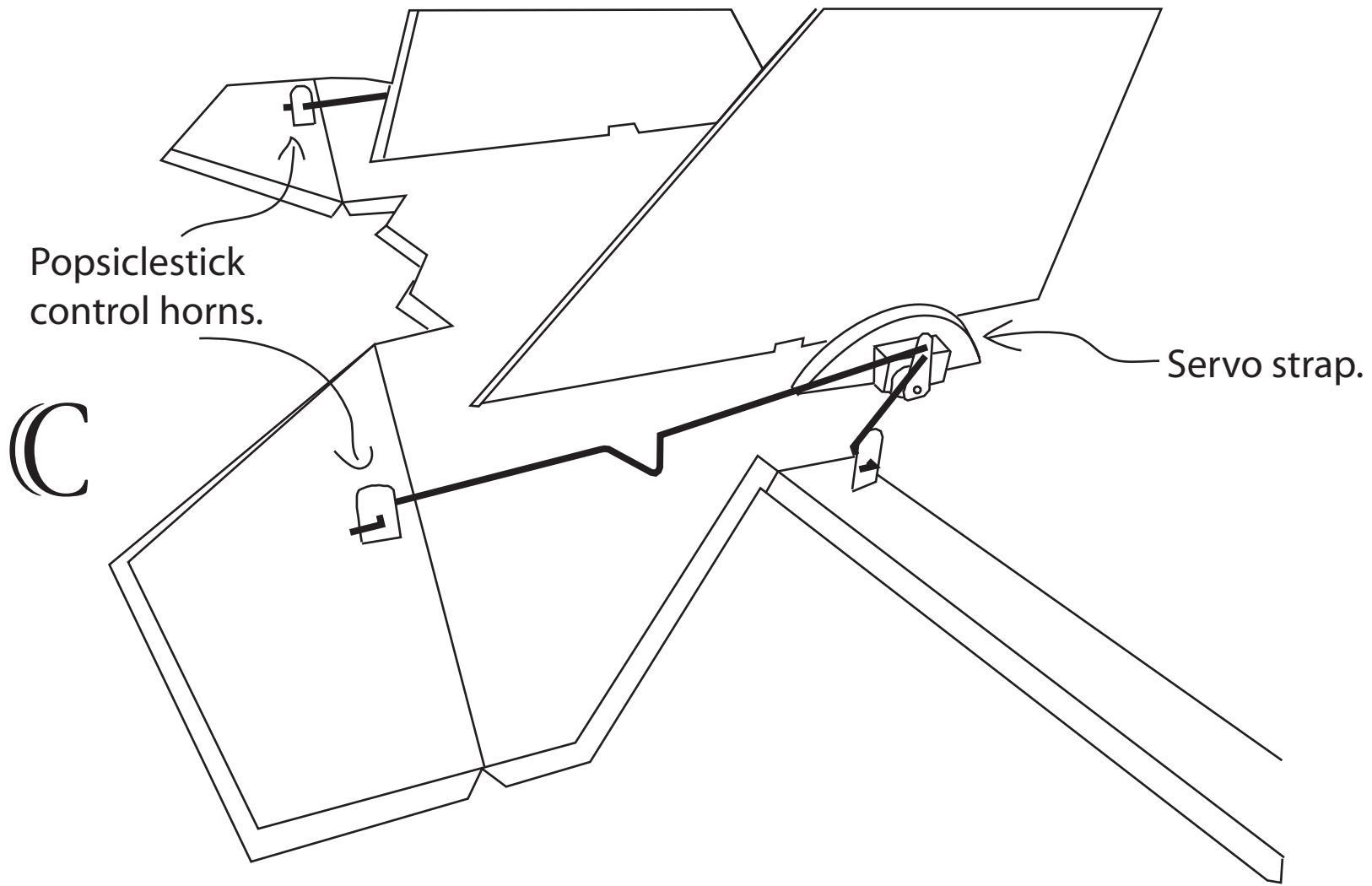


B

Aviation JOKE

In the Ozarks, there was a mountaineer that was reputed to have the best hunting dog ever, by the name of Co-pilot. Three city folks went up in the mountains and wanted to rent him. "Good huntin dog,...gonna cost ya \$50.00 a day." They agreed, and three days later came back with the limit. The next year they came back. "Co-pilot got better, gonna cost ya \$75.00 a day." Again they agreed, and 2 days later came back with the limit. The third year they came back and told the mountaineer they had to have Co-pilot, even if it cost \$100.00 a day. "You can have the worthless mutt for \$5.00. "But we don't understand, what happened to him?" "Well, a crew from that there air base nearby come up and rent him. One of them idiots called him pilot, and he's been sitting on his ass bark'in ever since!"

C

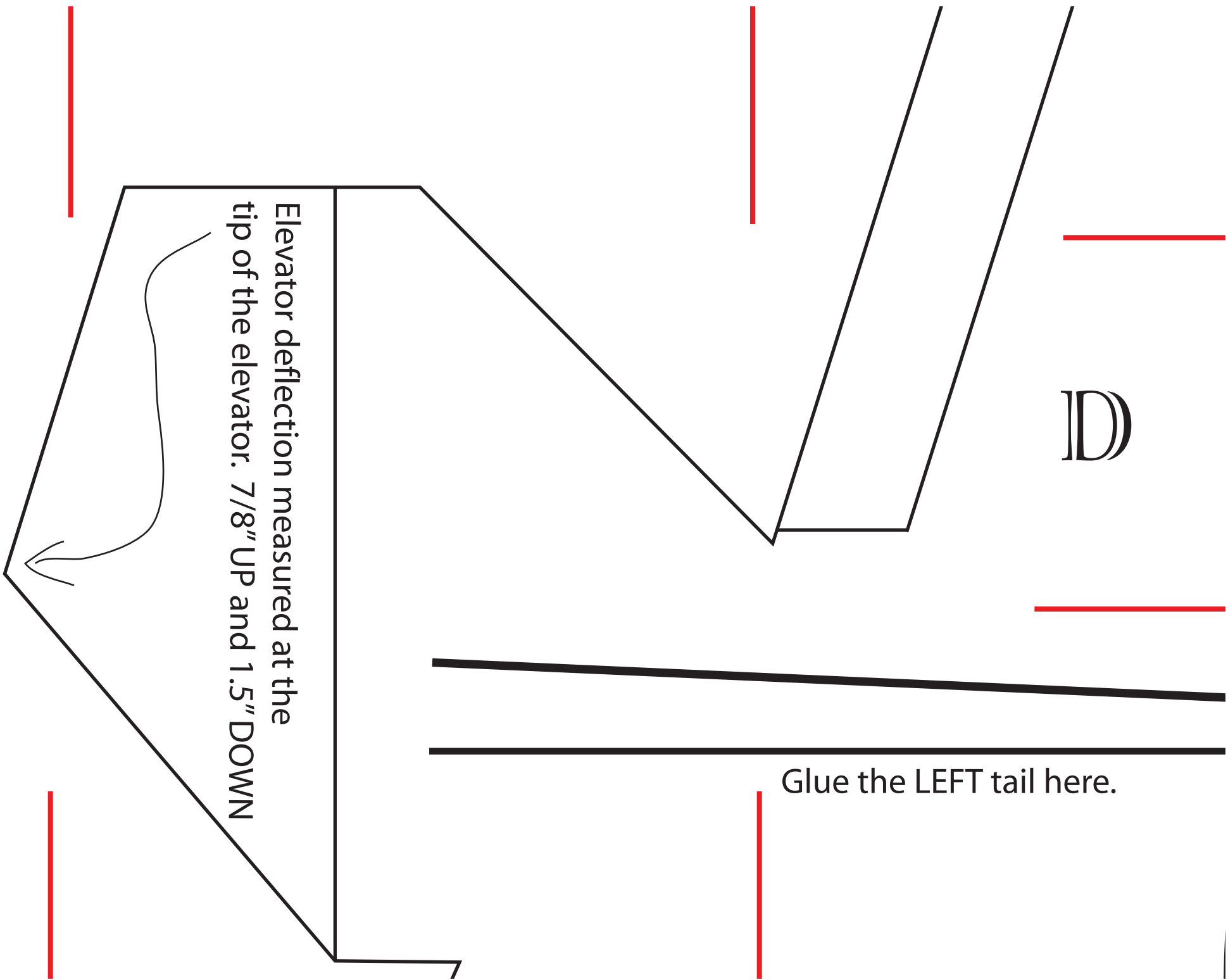


Close up view of dual pushrod setup.

D

Glue the LEFT tail here.

Elevator deflection measured at the tip of the elevator. 7/8" UP and 1.5" DOWN



www.MikeysRC.com

Glue a 12 inch BBQ skewer here.

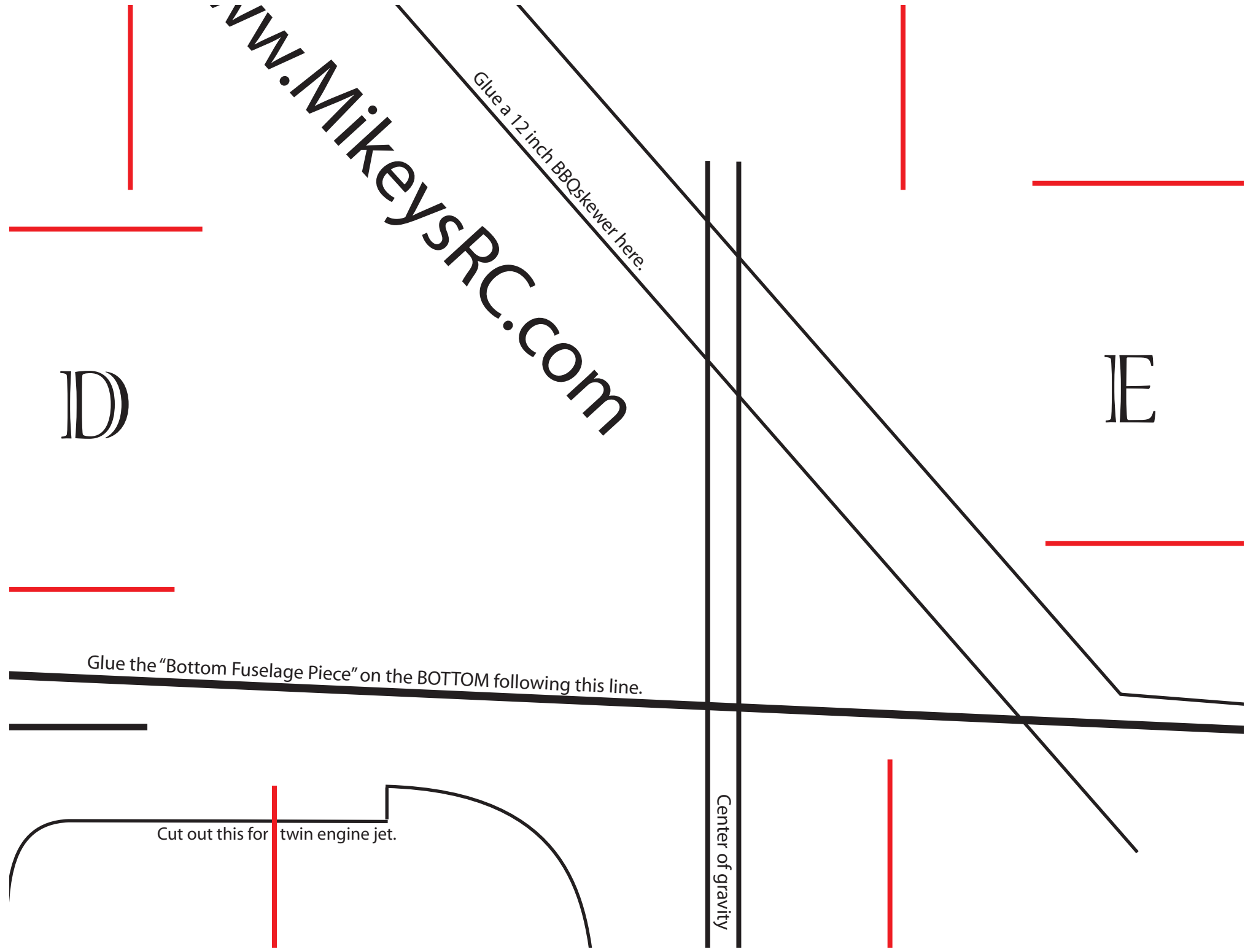
DD

IE

Glue the "Bottom Fuselage Piece" on the BOTTOM following this line.

Center of gravity

Cut out this for twin engine jet.



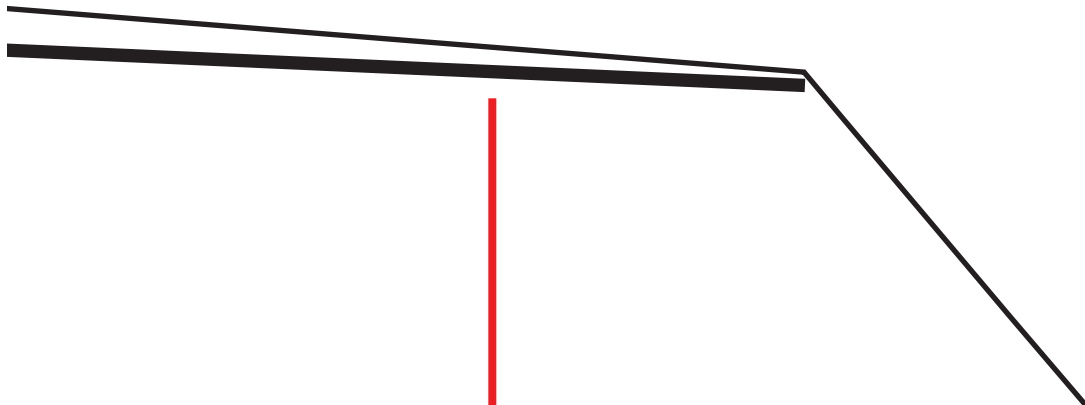
Plane Requirements

- *1 or 2 11.1V 1300-1600mAh 20C Li-po. batteries
- *1 or 2 4400kv brushless motor(s).
- *1 or 2 40 amp speed controlers.
- *1 or 2 GWS(or other brand) 64mm ducted fan(s).
- *2,9 gram servos.

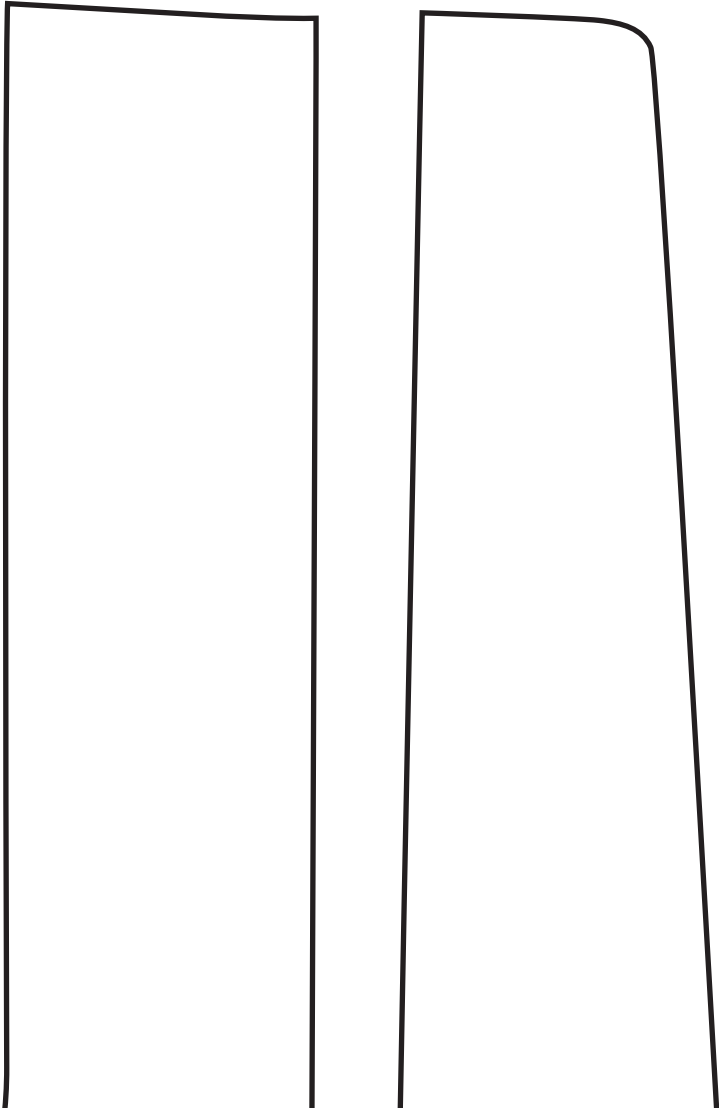
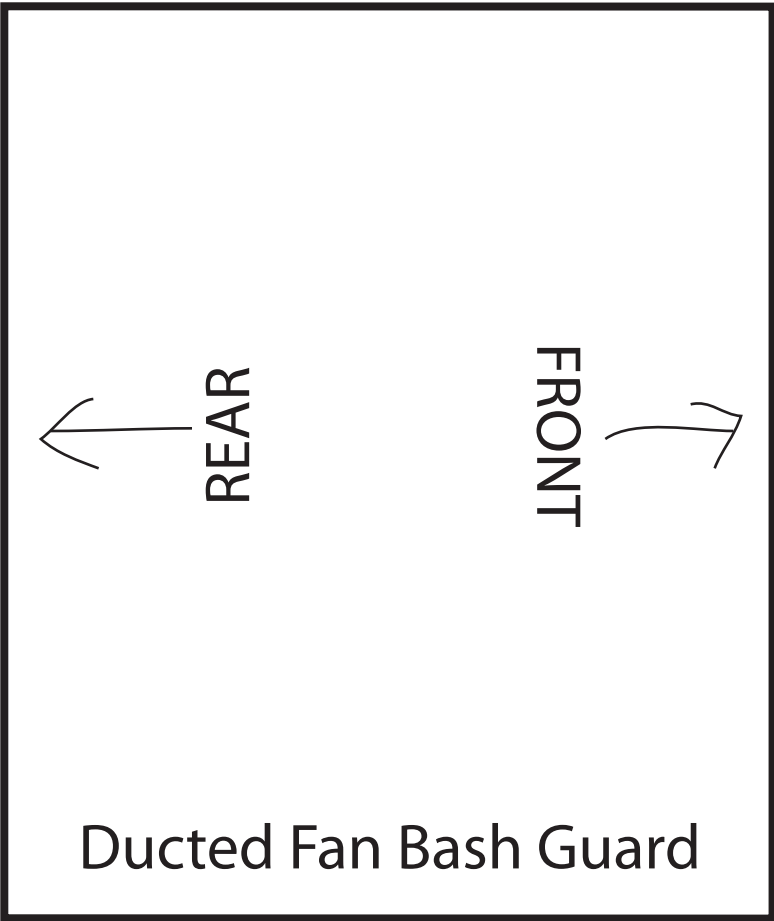
IE

Build Materials

- *45 inches X 35 inches sheet of 1/4 inch Foam core for the fuselage, wings and tail.
- *About 6 popsicle sticks.
- *16 guage galvanized steel wire on a roll(from a hardware store) or RC pushrods.
About 20 inches are needed.
- *Hot glue or 5 min epoxy.
- *Thick packing tape for control surface hinges.
- *2 12 inch wooden BBQ skewers
- * Sticky backed velcro to hold down motor speed controler and batteries.

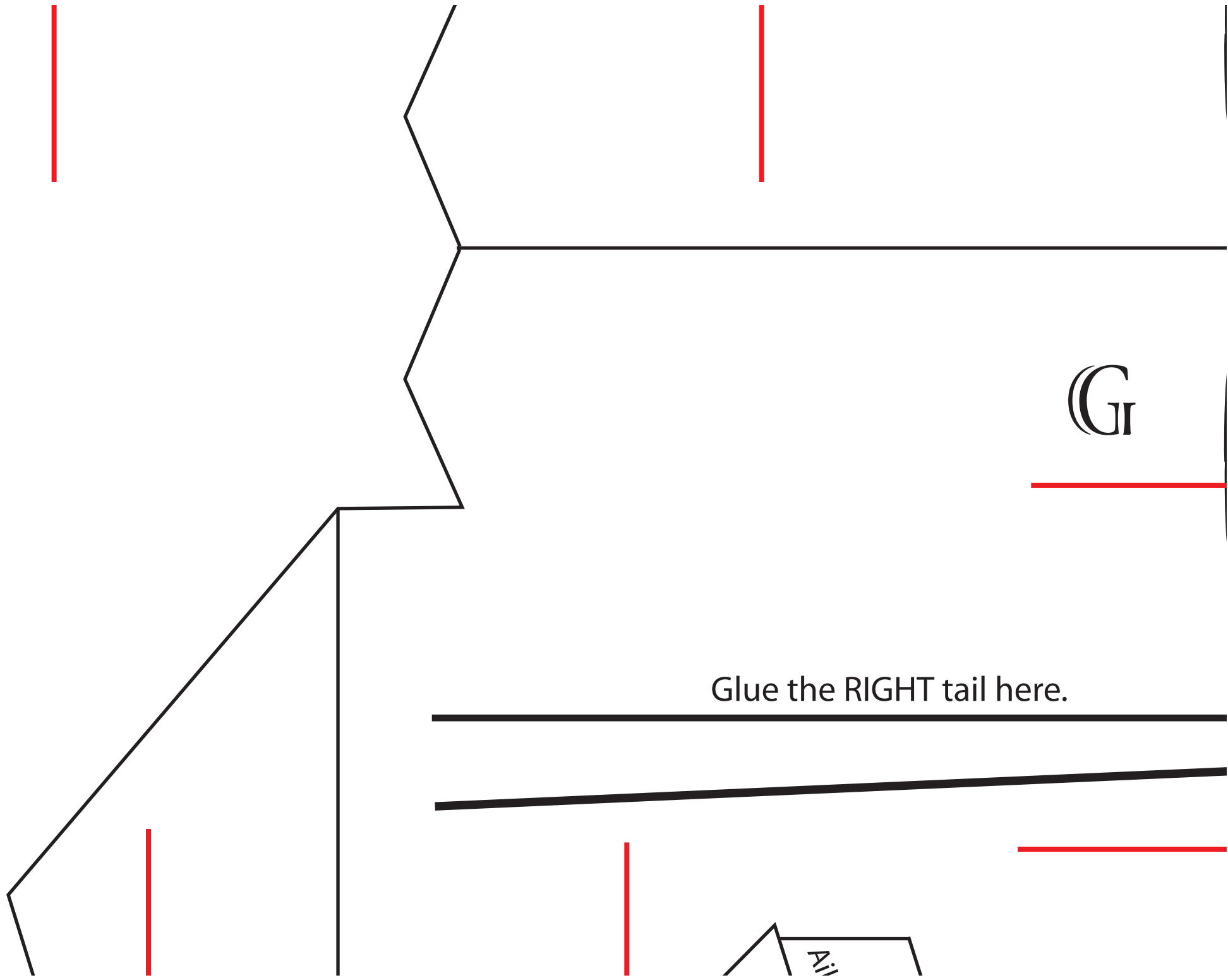


IF



IF

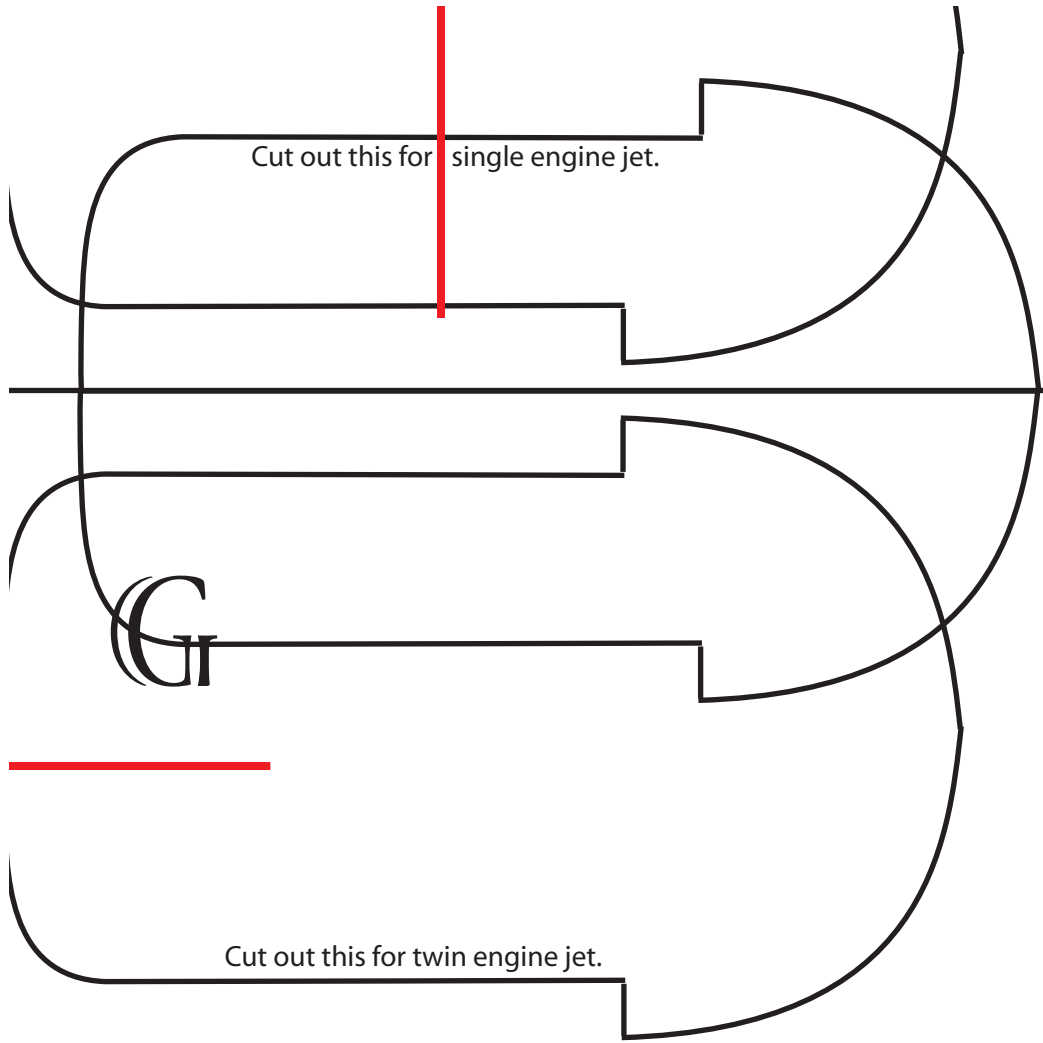




Glue the RIGHT tail here.

G

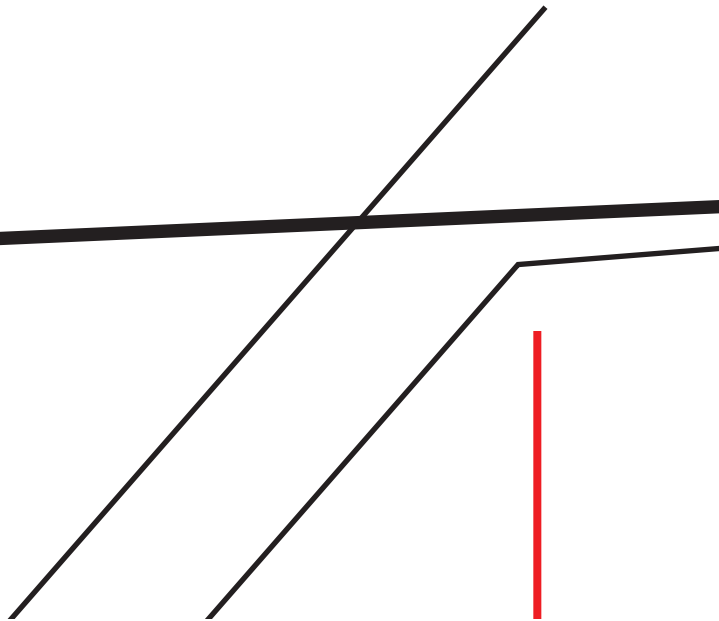
Yi

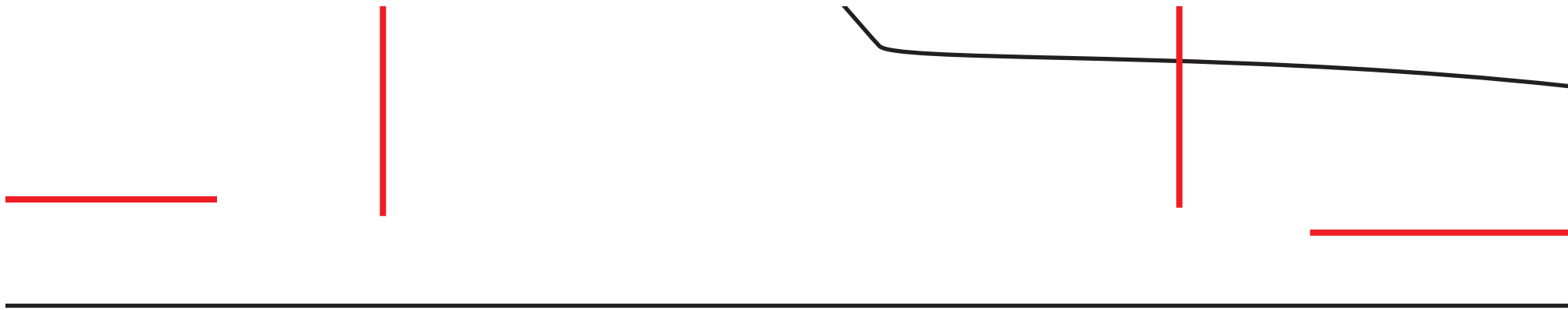


is be between these two lines. The plane should balance when held here.

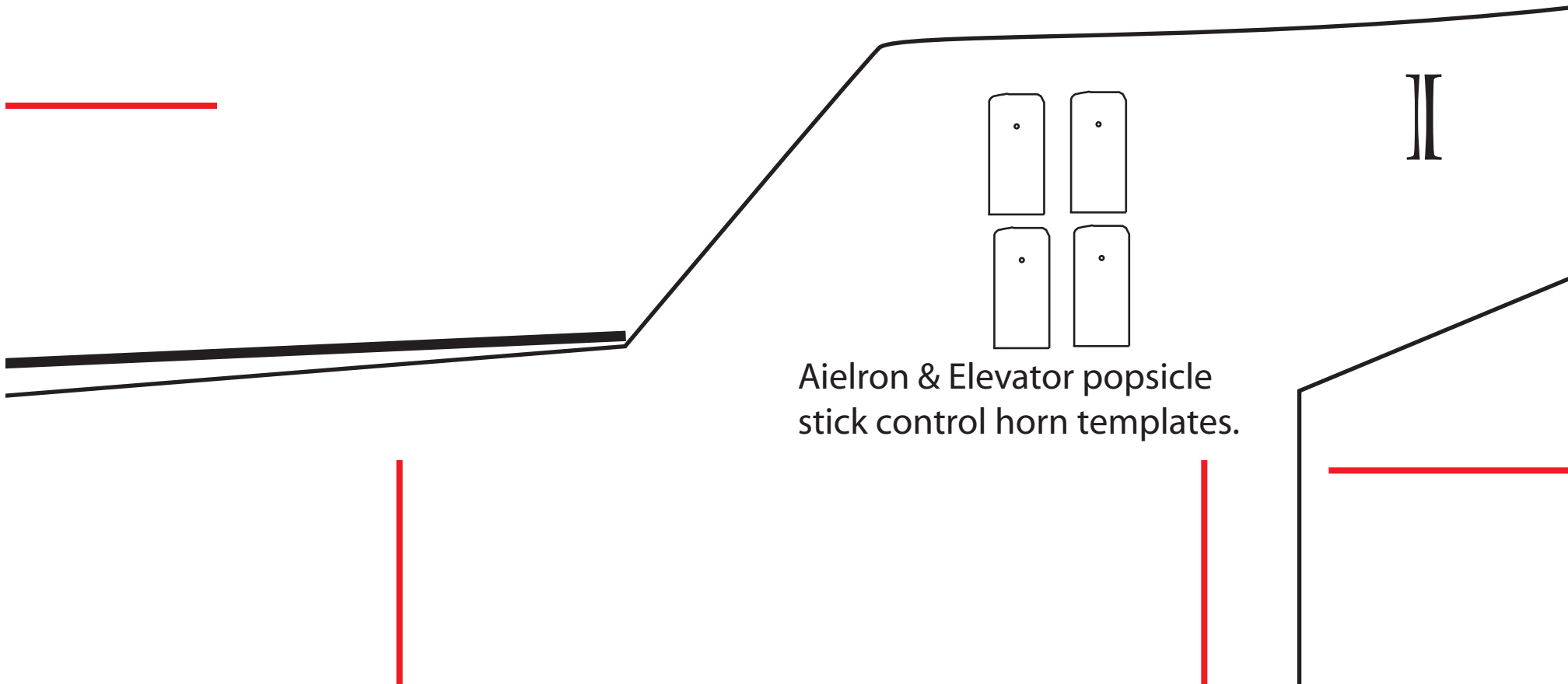
H

Glue the "Bottom Fuselage Piece" on the BOTTOM following this line.



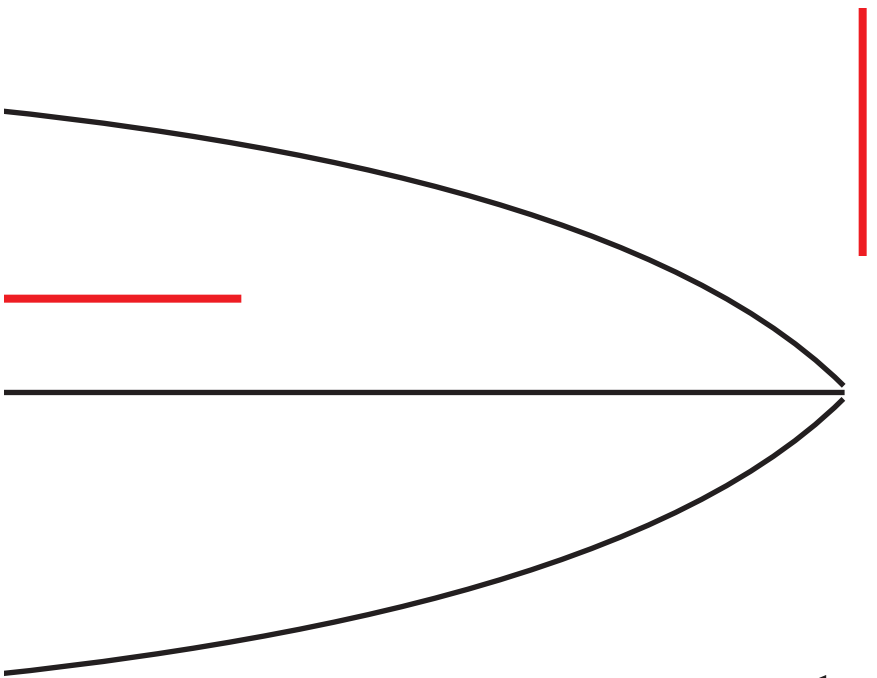


III

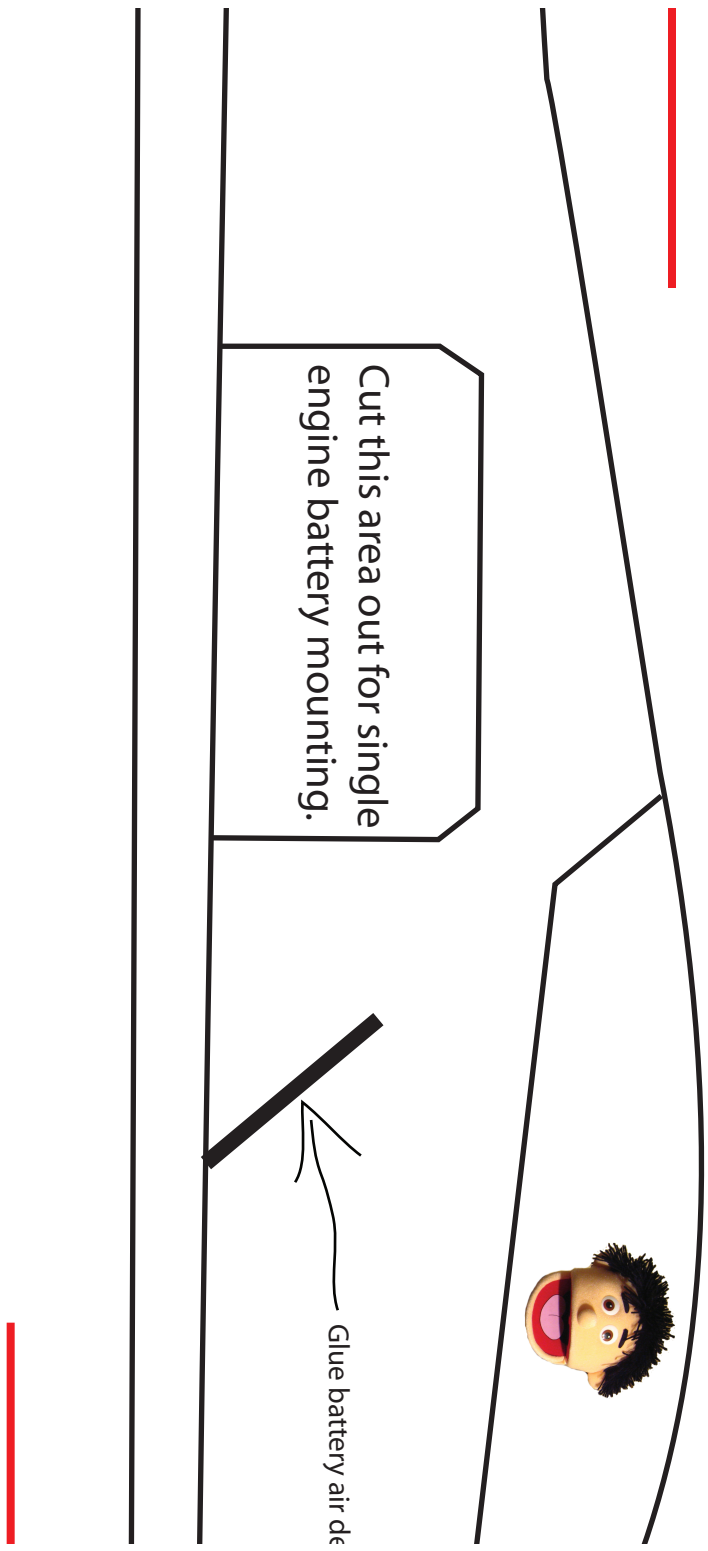


II

Aielron & Elevator popsicle stick control horn templates.



II
Tail, cut out 2 of these.



Cut this area out for single engine battery mounting.



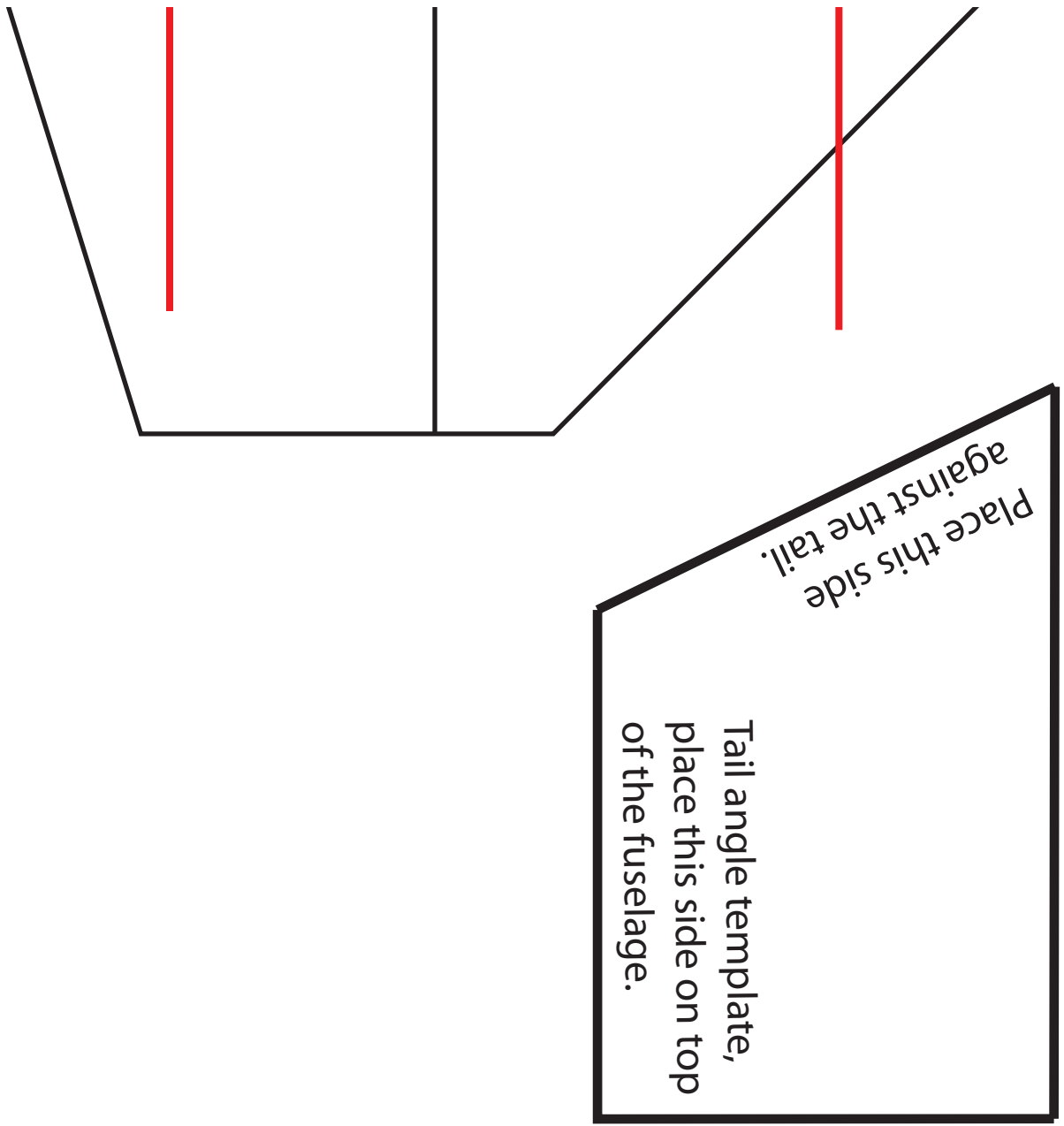
Glue battery air de

J

Aeron deflection measured at trailing edge 1/4" UP and 1/4" DOWN

Place this side against the tail.

Tail angle template, place this side on top of the fuselage.



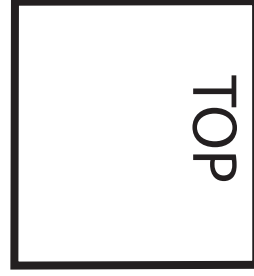
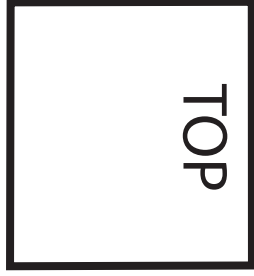
J

Do NOT Redistribute
COPYRIGHT 2009 MikeysRC

Glue a 12 inch BBOskewer here.

K

IK



Battery air deflectors.

IL

Mount the EDF bash guard
between these two marks.

Bottom Fuselage Piece, cut out 2 of these.

Servo straps

